

**FISH SHACK: WED FEBRUARY 3<sup>rd</sup>**

**True  
Forest**



**vs.**



**Tree  
Canopy**

**Peter Claggett and Renee Thompson, U.S. Geological Survey**

# What to do with patches of trees < 1 acre?

“Tree Canopy over Turf Grass”, or

“Forest”, or

“Tree Canopy over Open Space”



# What to do with patches of trees < 1 acre?

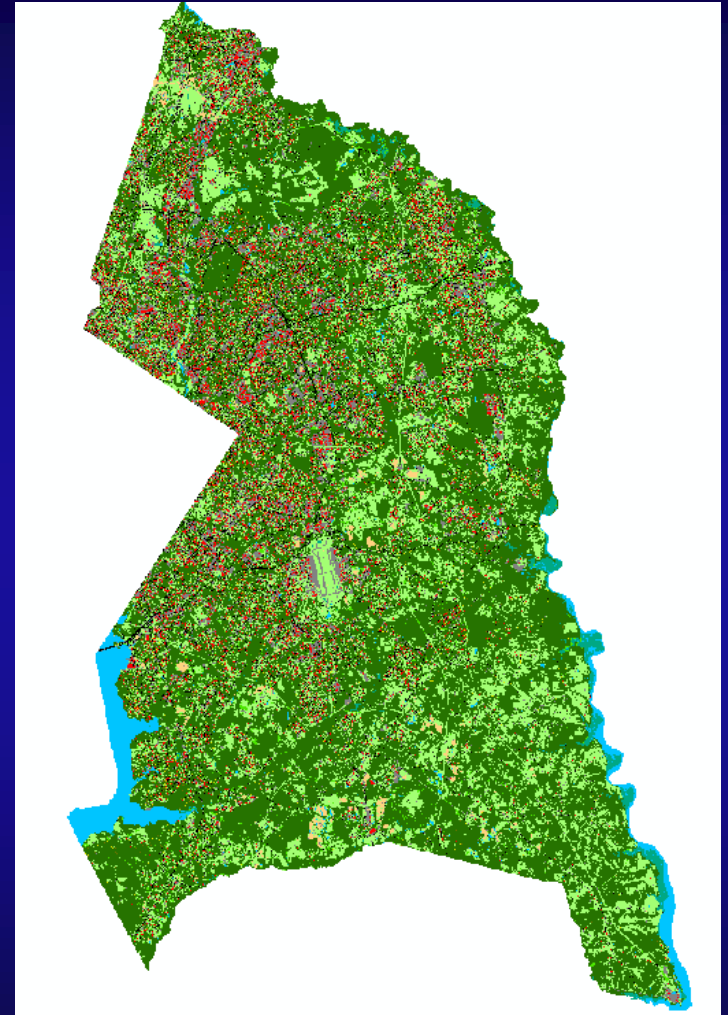
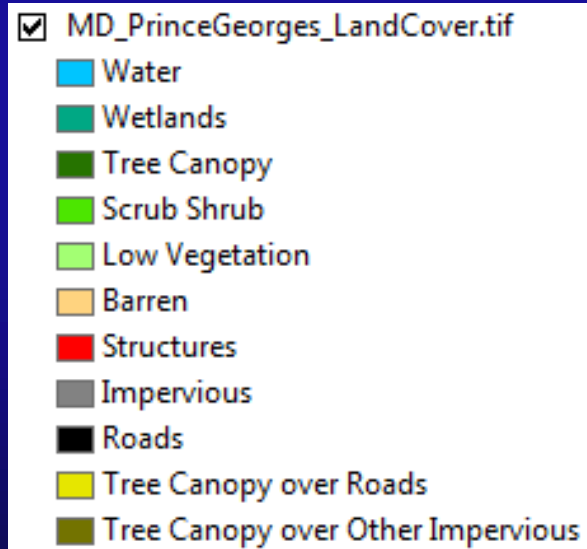
Spatial Context:

Patches < 1 acre, near impervious surfaces, and located in developed areas

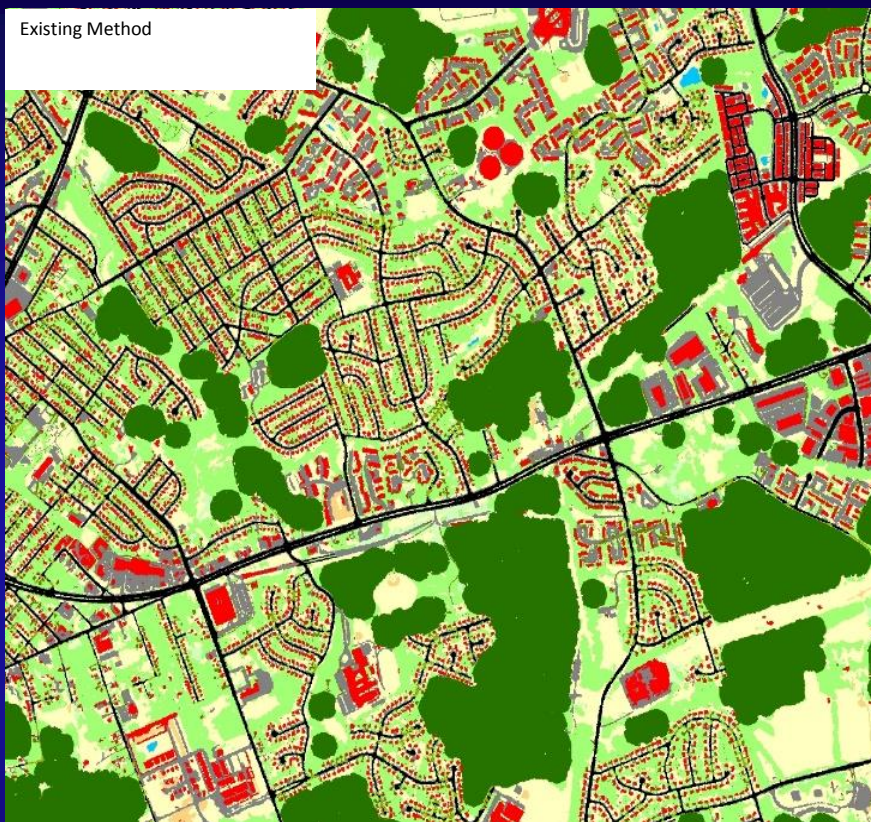
Patches < 1 acre, farther from impervious surfaces, and located in developed areas

Patches < 1 acre located in rural areas

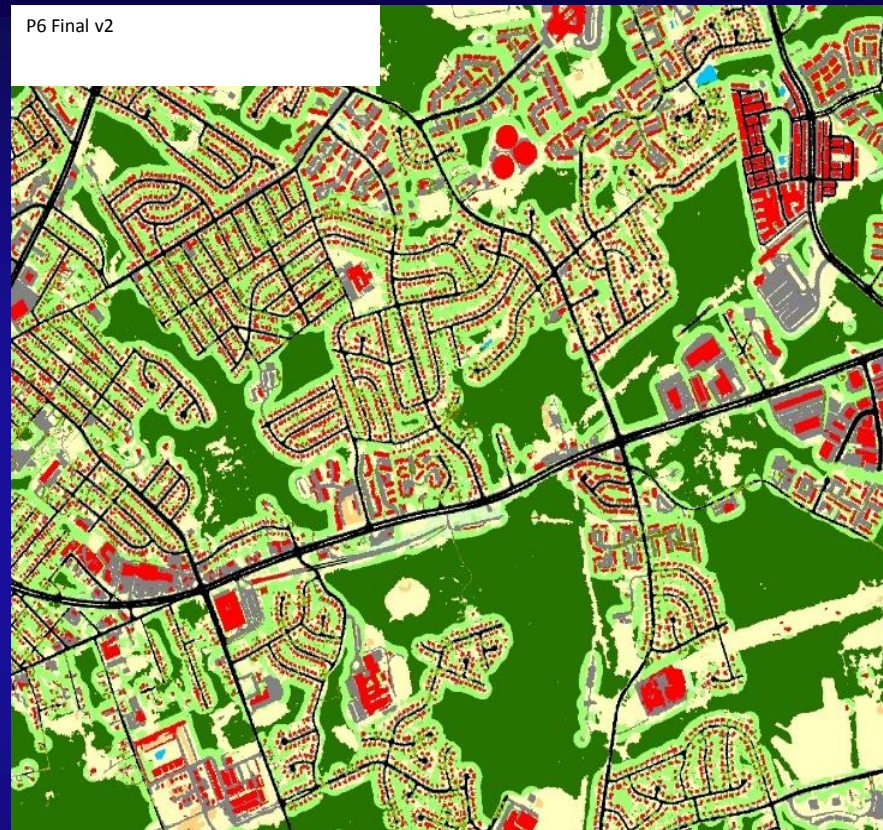
# High Resolution Land Cover 2013



## Old Method

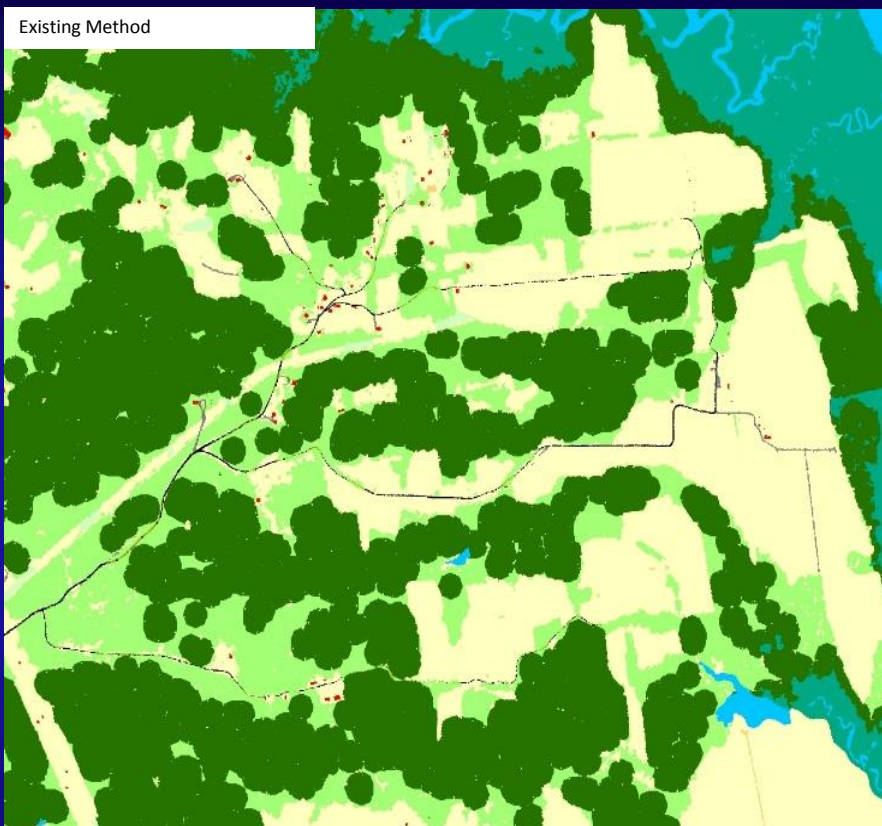


## New Method

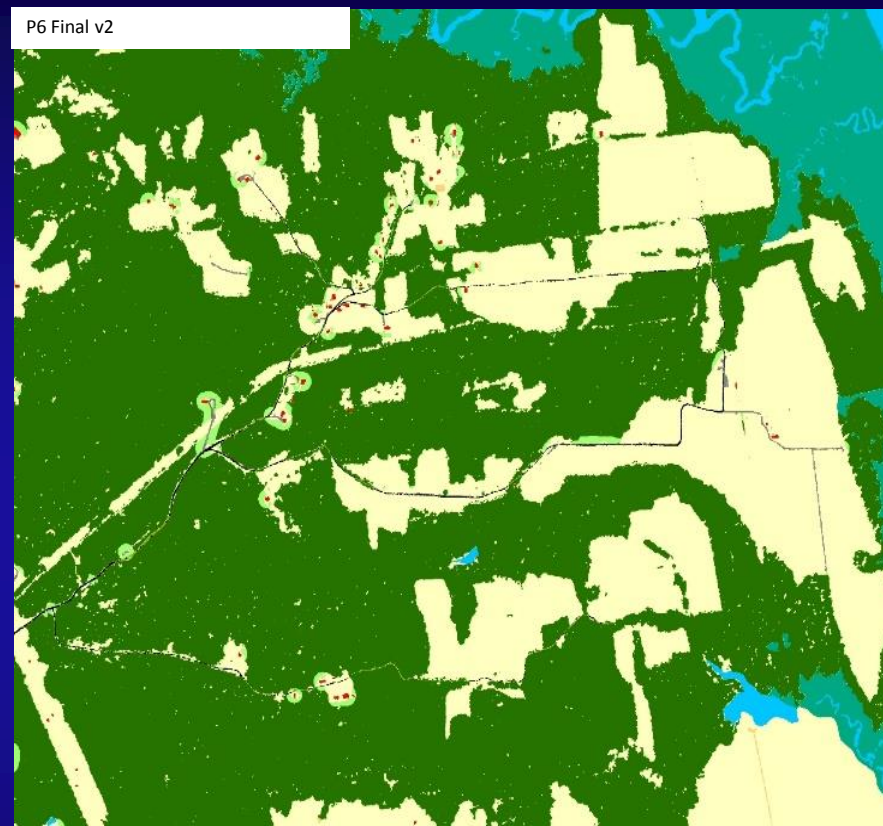


**Figure 1.** Existing (P6 Final v1) vs P6 Final v2 methodology for mapping forests (dark green) and tree canopy over turf grass (light green) in a densely developed area.

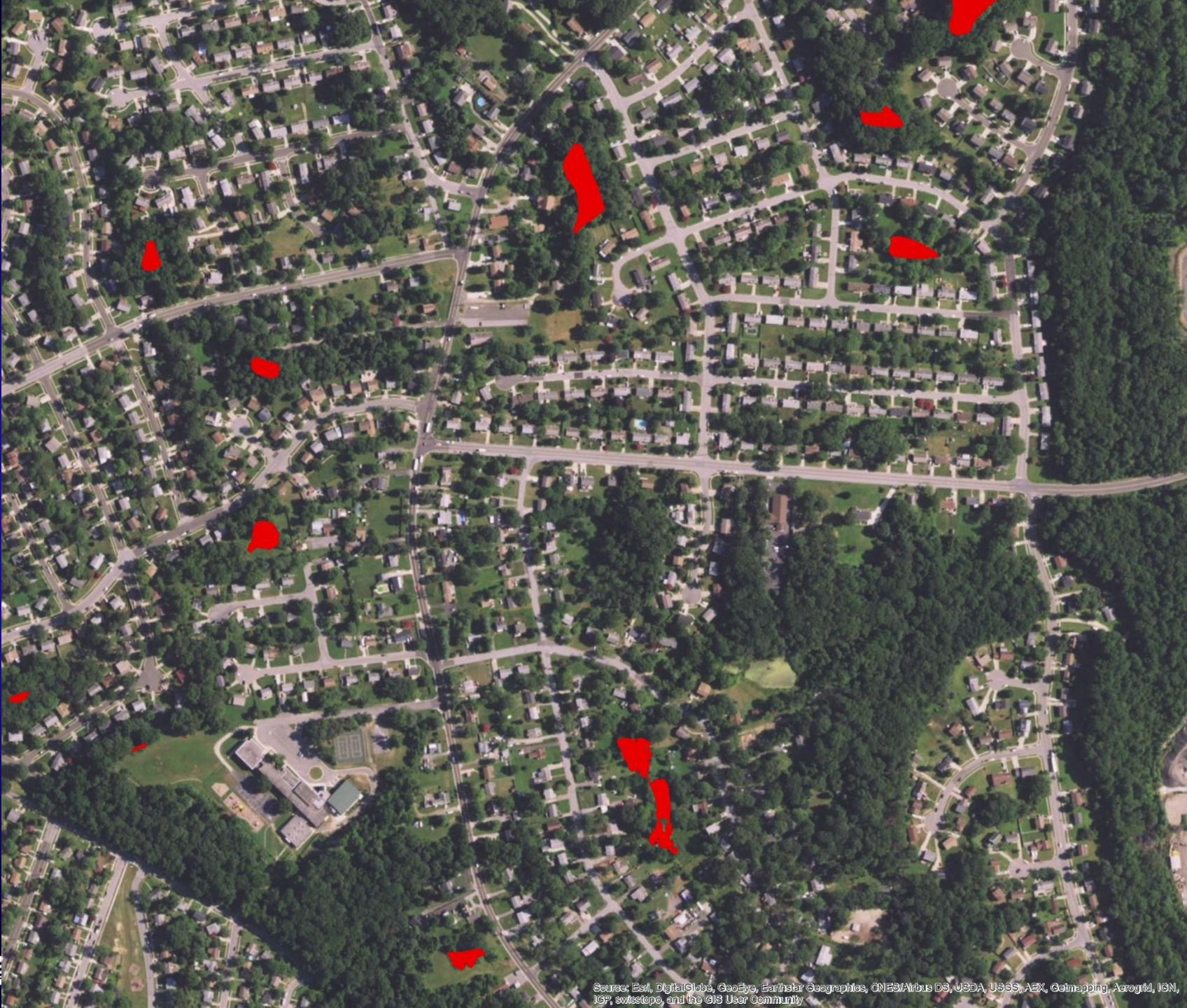
## Old Method



## New Method



**Figure 2.** Existing vs P6 Final v2 methodology for mapping forests (dark green) and tree canopy over turf grass (light green) in a rural area.





Source: Esri, DigitalGlobe, GeoEye, Earthstar Geographics, CNES/Airbus DS, USDA, USGS, AEX, Getmapping, Aerogrid, IGN, IGP, Swisstopo, and the GIS User Community









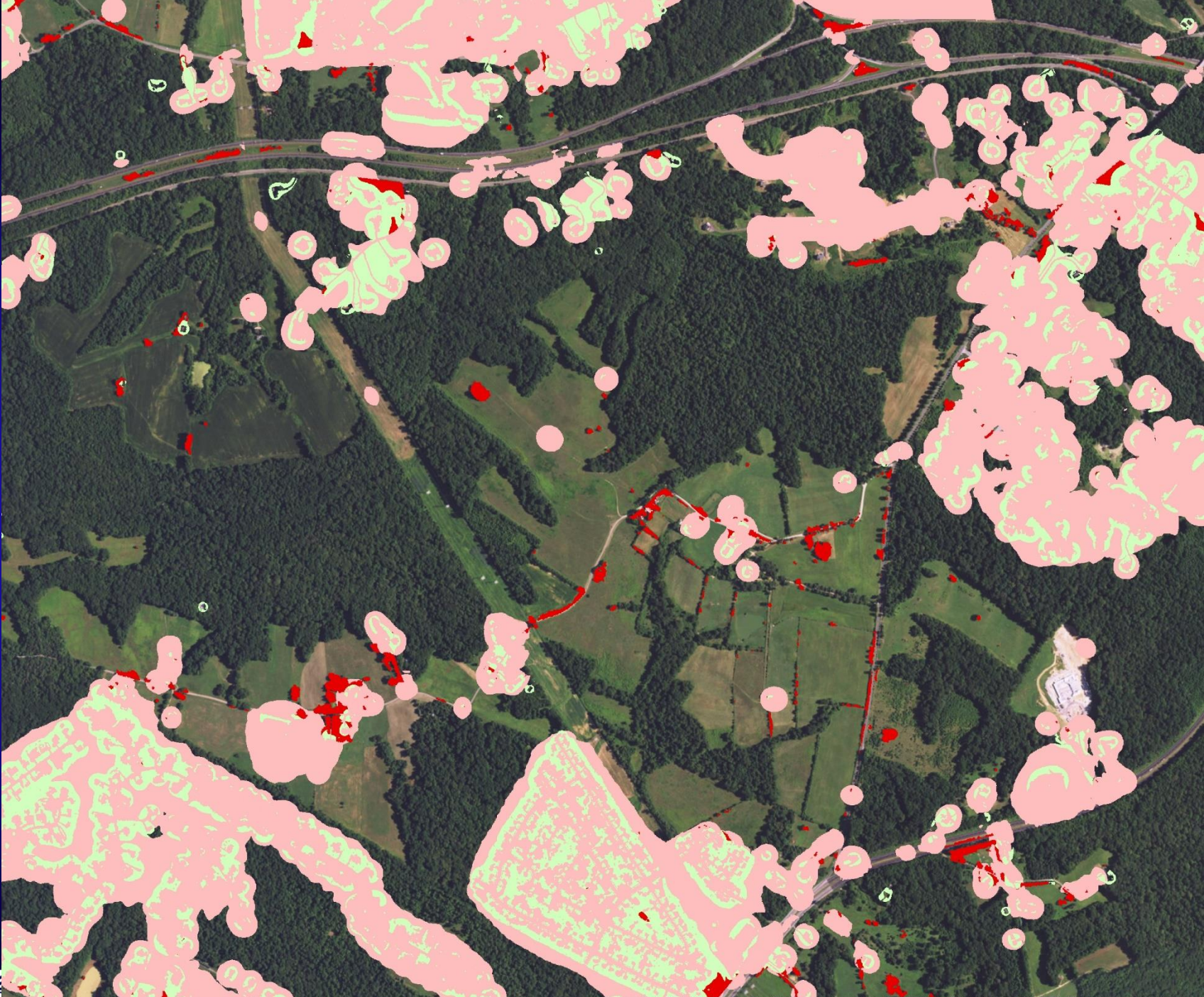
Source: Esri, DigitalGlobe, GeoEye, Earthstar Geographics, CNES/Airbus DS, USDA, USGS, AEX, Getmapping, Aerogrid, IGN, IGP, swisstopo, and the GIS User Community





Source: Esri, DigitalGlobe, GeoEye, Earthstar Geographics, CNES/Airbus DS, USDA, USGS, AeroX, Getmapping, Aerogrid, IGN, IGP, swisstopo, and the GIS User Community





Source: Esri, DigitalGlobe, GeoEye, Earthstar Geographics, CNES/Airbus DS, USDA, USGS, AeroX, Getmapping, Aerogrid, IGN, IGP, swisstopo, and the GIS User Community



# What to do with patches of trees < 1 acre?

1. Patch < 1 acre & located in developed areas = “Tree Canopy over Turf Grass”
2. Patch > 1 and in developed areas = “Forest”
3. Patch < 1 acre & located in rural areas = “Open Space”