

Vulnerability

Resource Lands Assessment for the Chesapeake Bay Watershed



Development Pressure

 High

 Moderate

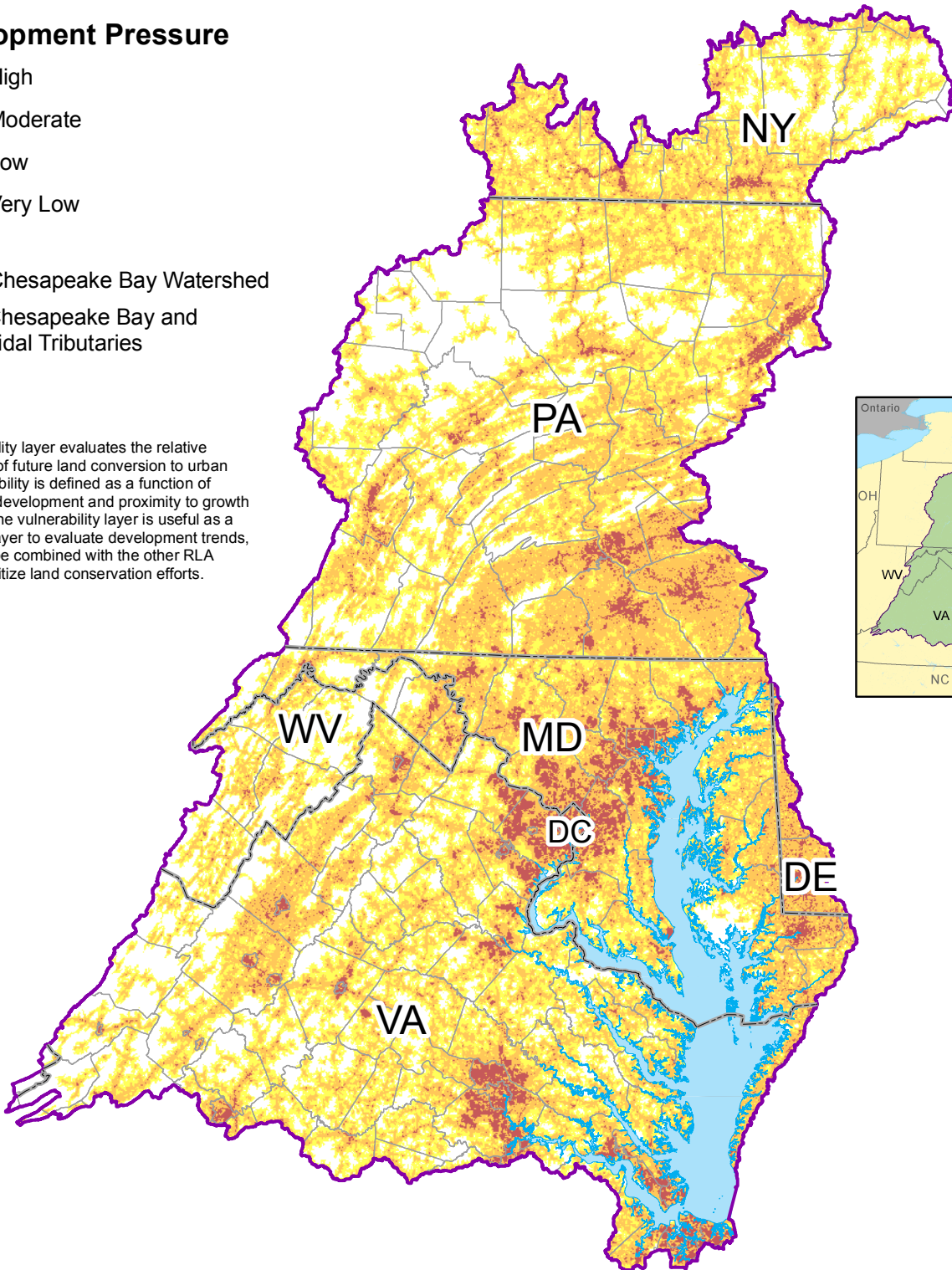
 Low

 Very Low

 Chesapeake Bay Watershed

 Chesapeake Bay and Tidal Tributaries

The vulnerability layer evaluates the relative potential risk of future land conversion to urban uses. Vulnerability is defined as a function of suitability for development and proximity to growth "hot spots". The vulnerability layer is useful as a stand-alone layer to evaluate development trends, but can also be combined with the other RLA layers to prioritize land conservation efforts.



Data Sources: Chesapeake Bay Program

For more information, visit www.chesapeakebay.net

Disclaimer: www.chesapeakebay.net/termsfuse.htm

0 25 50 100 Kilometers

0 25 50 100 Miles N