

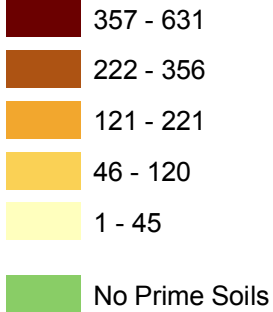
Potential Prime Soils

Resource Lands Assessment for the Chesapeake Bay Watershed

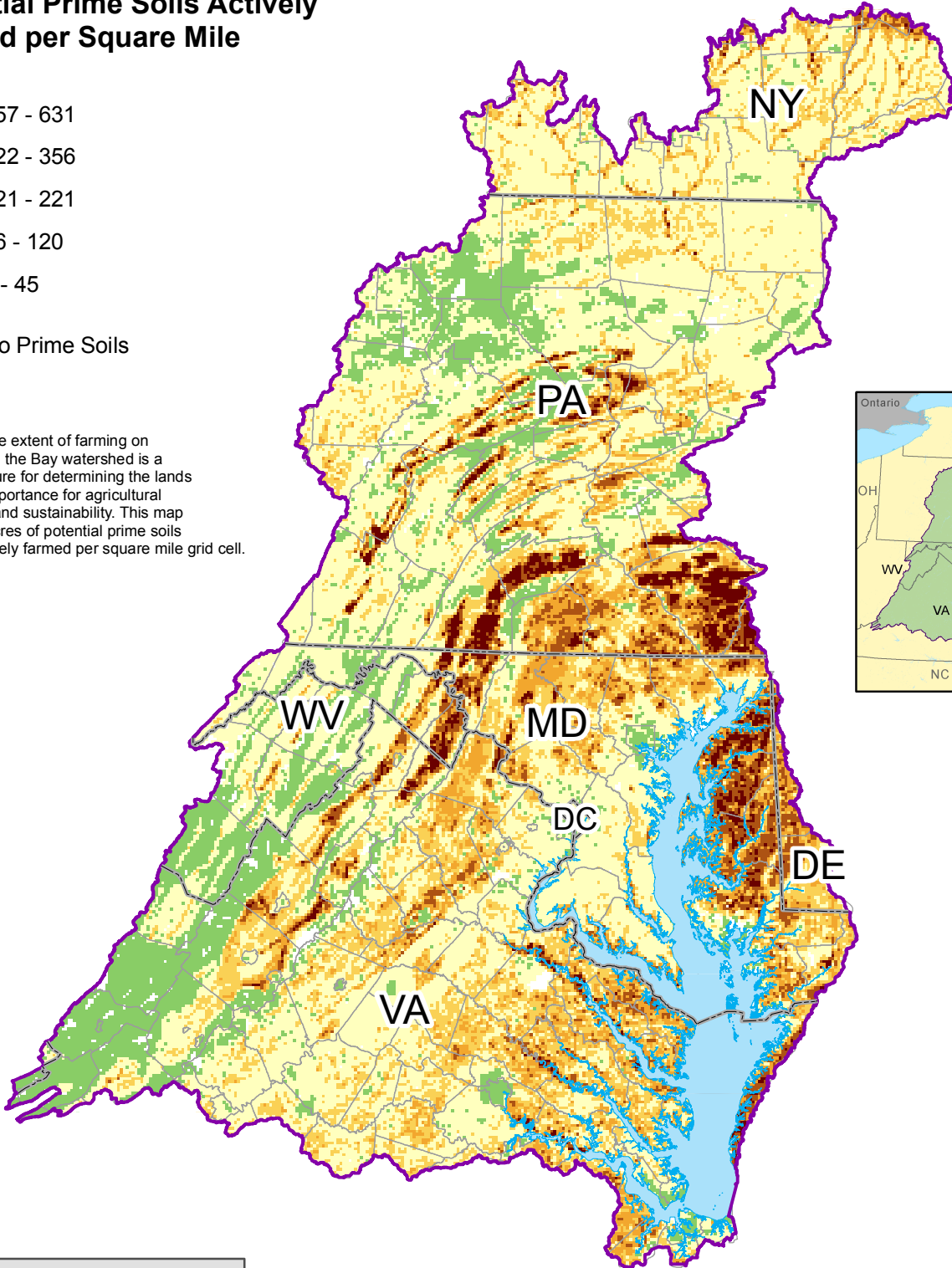


Potential Prime Soils Actively Farmed per Square Mile

Acres



Assessing the extent of farming on prime soils in the Bay watershed is a useful measure for determining the lands of highest importance for agricultural productivity and sustainability. This map shows the acres of potential prime soils that are actively farmed per square mile grid cell.



Data Sources: Chesapeake Bay Program

For more information, visit www.chesapeakebay.net
Disclaimer: www.chesapeakebay.net/termsfuse.htm

